

PANEL-MOUNTED SOCKET OUTLETS ANGLED

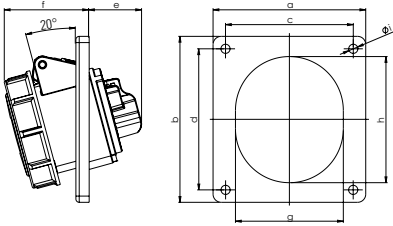
according to IEC 60309, EN 60309, VDE 0623



PANEL-MOUNTED SOCKET OUTLET ANGLED 20°

watertight IP67

- screw terminals
- in three parts
- nickel-plated contacts



POLES	3	4	5	3	4	5
AMPERE	16			32		

Flange a	92	92	92	92	92	92
Flange b	100	100	100	100	100	100
Hole spacing c	77	77	77	77	77	77
Hole spacing d	85	85	85	85	85	85
e	33	34	38	48	48	48
f	53	55	58	62	62	62
g	51	56	65	65	65	70
h	61	67	76	75	75	80
i	5,5	5,5	5,5	5,5	5,5	5,5
Weight [g/each]	160	167	199	221	237	280

VOLTAGE	110 V~	230 V~	400 V~	440 V~	500 V~
FREQUENCY	50/60 Hz	50/60 Hz	50/60 Hz	50/60 Hz	50/60 Hz
DESIGNATION	4h	3p = 6h 4p/5p = 9h	3p = 9h 4p/5p = 6h	11h	7h

AMPERE	POLES	ITEM NO.	ITEM NO.	ITEM NO.	ITEM NO.	ITEM NO.	PACKING UNIT
16	3	F31S183	F31S283			F31S583	10
16	4	F41S183	F41S283	F41S383	F41S483	F41S583	10
16	5		F51S283	F51S383		F51S583	10
32	3	F32S183	F32S283			F32S583	10
32	4	F42S183	F42S283	F42S383	F42S483	F42S583	10
32	5		F52S283	F52S383		F52S583	10

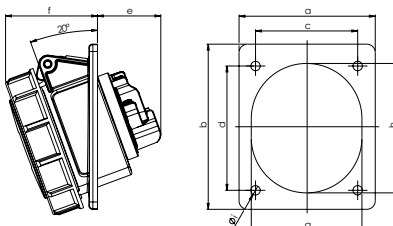
plug  power



PANEL-MOUNTED SOCKET OUTLET ANGLED 20°

watertight IP67

- screw terminals
- nickel-plated contacts



POLES	3	4	5	3	4	5
AMPERE	16			32		

Flange a	70	70	80	80	80	80
Flange b	85	85	97	97	97	97
Hole spacing c	50	50	60	60	60	60
Hole spacing d	65	65	73	73	73	73
e	38	38	38	48	48	48
f	50	52	55	59	59	61
g	51	56	65	65	65	70
h	61	67	76	75	75	80
i	5,5	5,5	5,5	5,5	5,5	5,5
Weight [g/each]	128	132	186	207	224	262

VOLTAGE	230 V~	400 V~	440 V~	500 V~
FREQUENCY	50/60 Hz	50/60 Hz	50/60 Hz	50/60 Hz
DESIGNATION	3p = 6h 4p/5p = 9h	3p = 9h 4p/5p = 6h	11h	7h

AMPERE	POLES	ITEM NO.	ITEM NO.	ITEM NO.	ITEM NO.	PACKING UNIT
16	3 ^a	F31S270			F31S570	10
16	4 ^a	F41S270	F41S370	F41S470	F41S570	10
16	5 ^a	F51S270	F51S370		F51S570	10
32	3 ^a	F32S270			F32S570	10
32	4 ^a	F42S270	F42S370	F42S470	F42S570	10
32	5 ^a	F52S270	F52S370		F52S570	10