

DIN-RAIL PANEL PRODUCTS

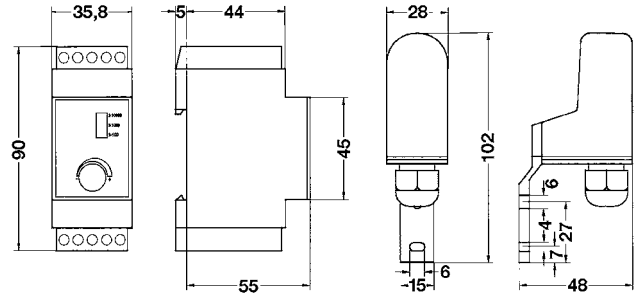
Twilight switch



TWILIGHT SWITCH
WITH SEPARATE LIGHT COLLECTOR
230 V~, 50 ... 60 Hz
16 A, 1 CO contact

2 M

	ITEM NO.	WEIGHT g/ EACH	PACKING UNIT
	DS2301W	230	1



Twilight switch DS2301W		
Technical data		
Light intensity	Area 1 Area 2 Area 3	2 -100 Lux 2 -1000 Lux 2 -10 000 Lux
Delay when switching on		8 sec.
Delay when switching off		38 sec.
Contact material		AgCdO
Contact interval		< 3 mm
Interval control connections / contact		5 mm
Rated insulation voltage contact / contact contact / magnet system		1 KV 4 KV
Switching capacity AC		16 A / 250 V cos φ =1
Incandescent lamp load		2300 W
Inductive load cos φ = 0.8		3 A / 250 V
Mechanical endurance, change of position		5 x 10 ⁷
Endurance with rated load, cos φ = 1 and 10 ³ / h		10 ⁵
Endurance with incandescent lamps 1000 W and 10 ³ / h		25 x 10 ³
Endurance with rated load, cos φ = 0.6 und 10 ³ / h		75 x 10 ³
Switch position display relay		LED red
Switch position display switch point		LED green
Switch-on duration		100%
Temperature at the installation location min. / max.		0°C to 55°C
Total power loss during continuous excitation		2.2 W
Degree of protection		IP20
Protection type light collector		IP65
Max. cable length to light collector		100 m

Wiring diagram:
Twilight switch
with separate light collector

