

# PANEL-MOUNTED SOCKET OUTLETS STRAIGHT

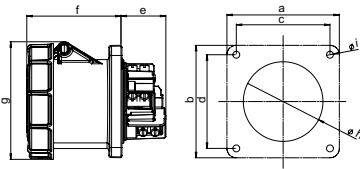
according to IEC 60309, EN 60309, VDE 0623



## PANEL-MOUNTED SOCKET OUTLET STRAIGHT

watertight IP67

- HighPower version
- with pilot contact
- screw terminals
- nickel-plated contacts



POLES	3	4	5
AMPERE	125		

a and b	120	120	120
c and d	100	100	100
e	48	48	48
f	101	101	101
g	126	126	126
h	90	90	90
i	8	8	8
Weight [g/each]	752	890	986

VOLTAGE	230 V~	230 V~	400 V~	440 V~	500 V~
FREQUENCY	50/60 Hz	50/60 Hz	50/60 Hz	50/60 Hz	50/60 Hz
DESIGNATION	3p = 6h 4p/5p = 9h	1h	3p = 9h 4p/5p = 6h	11h	7h

AMPERE	POLES	ITEM NO.	ITEM NO.	ITEM NO.	ITEM NO.	ITEM NO.	PACKING UNIT
125	3	F34S257				F34S557	2
125	4	F44S257		F44S357	F44S457	F44S557	2
125	5	F54S257	F54S057	F54S357		F54S557	2

# PANEL-MOUNTED SOCKET OUTLETS ANGLED

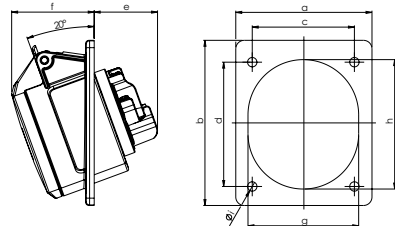
according to IEC 60309, EN 60309, VDE 0623



## PANEL-MOUNTED SOCKET OUTLET ANGLED 20°

splash-proof IP54  
\*splash-proof IP44

- screw terminals
- brass contacts



POLES	3	4	5	3	4	5
AMPERE	16			32		

Flange a	70	70	80	80	80	80
Flange b	85	85	97	97	97	97
Hole spacing c	50	50	60	60	60	60
Hole spacing d	65	65	73	73	73	73
e	38	38	38	48	48	48
f	47	47	49	54	54	55
g	51	56	65	65	65	70
h	61	67	76	75	75	80
i	5,5	5,5	5,5	5,5	5,5	5,5
Weight [g/each]	111	127	154	166	182	214

VOLTAGE	110 V~	230 V~	400 V~	440 V~	500 V~
FREQUENCY	50/60 Hz	50/60 Hz	50/60 Hz	50/60 Hz	50/60 Hz
DESIGNATION	4h	3p = 6h 4p/5p = 9h	3p = 9h 4p/5p = 6h	11h	7h

AMPERE	POLES	ITEM NO.	ITEM NO.	ITEM NO.	ITEM NO.	ITEM NO.	PACKING UNIT
16	3	F31S120	F31S220			F31S520	10
16*	4	F41S120	F41S220	F41S320	F41S420	F41S520	10
16	5		F51S220	F51S320		F51S520	10
32*	3	F32S120	F32S220			F32S520	10
32*	4	F42S120	F42S220	F42S320	F42S420	F42S520	10
32	5		F52S220	F52S320		F52S520	10