

# APPLIANCE INLETS

according to IEC 60309, EN 60309, VDE 0623



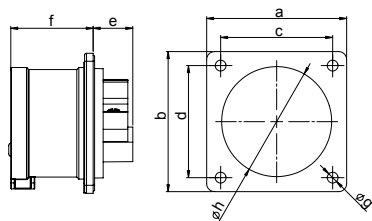
## APPLIANCE INLET, STRAIGHT

splash-proof IP44

- screw terminals
- Notice acc. to EN 60309: for correct use, a retaining lug or retaining slot is necessary.
- brass contacts

a with Flange 75 x 75 mm,

b with Flange 70 x 70 mm



POLES	5 <sup>a</sup>	5 <sup>a</sup>	3 <sup>b</sup>	4 <sup>b</sup>	5 <sup>b</sup>	3 <sup>b</sup>	4 <sup>b</sup>	5 <sup>b</sup>
AMPERE	16	32	16		32			

a and b	75	75	70	70	70	70	70	70
c and d	60	60	56	56	56	56	56	56
e	20	21	21	21	20	21	21	21
f	42	51	42	42	42	51	51	51
g	5,5	5,5	5,5	5,5	5,5	5,5	5,5	5,5
h	55	55	43	43	55	55	55	55
Weight [g/each]	121	170	86	101	118	125	145	165

VOLTAGE	110 V~	230 V~	400 V~	500 V~
FREQUENCY	50/60 Hz	50/60 Hz	50/60 Hz	50/60 Hz
DESIGNATION	4h	3p = 6h 4p/5p = 9h	3p = 9h 4p/5p = 6h	7h

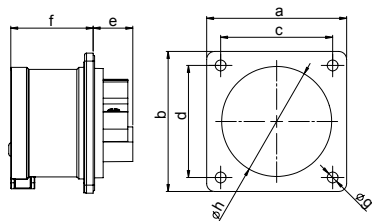
AMPERE	POLES	ITEM NO.	ITEM NO.	ITEM NO.	ITEM NO.	PACKING UNIT
16	5 <sup>a</sup>			A51S34		10
32	5 <sup>a</sup>			A52S34		10
16	3 <sup>b</sup>	A31S12	A31S22		A31S52	10
16	4 <sup>b</sup>	A41S12	A41S22	A41S32	A41S52	10
16	5 <sup>b</sup>		A51S22	A51S32	A51S52	10
32	3 <sup>b</sup>	A32S12	A32S22		A32S52	10
32	4 <sup>b</sup>	A42S12	A42S22	A42S32	A42S52	10
32	5 <sup>b</sup>		A52S22	A52S32	A52S52	10



## APPLIANCE INLET, STRAIGHT

splash-proof IP44

- screw terminals
- Notice acc. to EN 60309: for correct use, a retaining lug or retaining slot is necessary.
- brass contacts
- with Flange 60 x 60 mm



POLES	3
AMPERE	16

a and b	60
c and d	50
e	21
f	42
g	4,5
h	43
Weight [g/each]	78

VOLTAGE	230 V~
FREQUENCY	50/60 Hz
DESIGNATION	3p = 6h 4p/5p = 9h

AMPERE	POLES	ITEM NO.	PACKING UNIT
16	3	A31S23	10