

# LOW-VOLTAGE PLUGS AND SOCKET OUTLETS

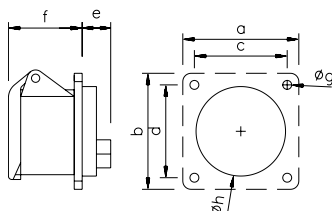
according to IEC 60309, EN 60309, VDE 0623



## PANEL-MOUNTED SOCKET OUTLET STRAIGHT

splash-proof IP44

- nickel-plated contacts



POLES	2	3	2	3
AMPERE	16		32	

a and b	55	55	55	55
c and d	45	45	45	45
e	19	19	19	19
f	47	47	47	47
g	4,5	4,5	4,5	4,5
h	43	43	43	43
Weight [g/each]	108	128	108	128

VOLTAGE	24 V~	42 V~	24/42 V~
FREQUENCY	50/60 HZ	50/60 HZ	100-200 HZ
DESIGNATION	WITHOUT AUXILIARY NOTCH	12H	4H

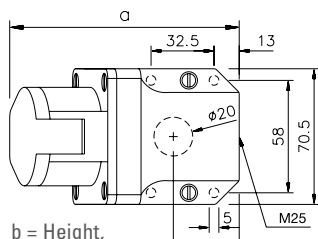
AMPERE	POLES	ITEM NO.	ITEM NO.	ITEM NO.	PACKING UNIT
16	2	F01S203	F01S603	F01S103	10
16	3	F11S203	F11S603	F11S103	10
32	2	F02S203	F02S603	F02S103	10
32	3	F12S203	F12S603	F12S103	10



## WALL-MOUNTED SOCKET OUTLET

splash-proof IP44

- cable entry above or behind
- nickel-plated contacts



b = Height,  
Angle = 15°

POLES	2	3	2	3
AMPERE	16		32	

a	119	119	119	119
b	85	85	85	85
Weight [g/each]	198	215	198	215

VOLTAGE	24 V~	42 V~	24/42 V~
FREQUENCY	50/60 HZ	50/60 HZ	100-200 HZ
DESIGNATION	WITHOUT AUXILIARY NOTCH	12H	4H

AMPERE	POLES	ITEM NO.	ITEM NO.	ITEM NO.	PACKING UNIT
16	2	D01S20	D01S60	D01S10	10
16	3	D11S20	D11S60	D11S10	10
32	2	D02S20	D02S60	D02S10	10
32	3	D12S20	D12S60	D12S10	10