

APPLIANCE INLETS

according to IEC 60309, EN 60309, VDE 0623

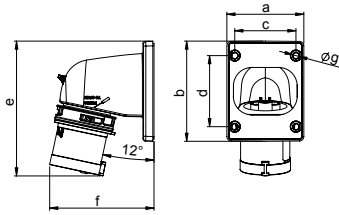


ANGLE APPLIANCE INLET

splash-proof IP44



- screw terminals
- quick release locking system (turn2fix)
- brass contacts



POLES	3	4	5	3	4	5
AMPERE	16			32		

a	66	66	90	90	90	90
b	86	86	100	100	100	100
c	53	53	77	77	77	77
d	61	61	85	85	85	85
e	116	117	153	163	163	164
f	90	93	98	100	100	103
g	5	5	5	5	5	5
Weight [g/each]	126	144	190	200	220	247

VOLTAGE	110 V~	230 V~	400 V~	500 V~
FREQUENCY	50/60 Hz	50/60 Hz	50/60 Hz	50/60 Hz
DESIGNATION	4h	3p = 6h 4p/5p = 9h	3p = 9h 4p/5p = 6h	7h

AMPERE	POLES	ITEM NO.	ITEM NO.	ITEM NO.	ITEM NO.	PACKING UNIT
16	3	A31S11	A31S21		A31S51	10
16	4	A41S11	A41S21	A41S31	A41S51	10
16	5		A51S21	A51S31	A51S51	10
32	3	A32S11	A32S21		A32S51	10
32	4	A42S11	A42S21	A42S31	A42S51	10
32	5		A52S21	A52S31	A52S51	10

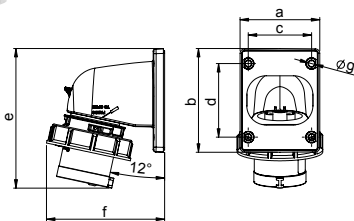


ANGLE APPLIANCE INLET

watertight IP67



- screw terminals
- quick release locking system (turn2fix)
- brass contacts



POLES	3	4	5	3	4	5
AMPERE	16			32		

a	66	66	90	90	90	90
b	86	86	100	100	100	100
c	53	53	77	77	77	77
d	61	61	85	85	85	85
e	116	117	153	163	163	164
f	99	103	107	110	110	114
g	5	5	5	5	5	5
Weight [g/each]	146	168	219	240	260	291

VOLTAGE	110 V~	230 V~	400 V~	500 V~
FREQUENCY	50/60 Hz	50/60 Hz	50/60 Hz	50/60 Hz
DESIGNATION	4h	3p = 6h 4p/5p = 9h	3p = 9h 4p/5p = 6h	7h

AMPERE	POLES	ITEM NO.	ITEM NO.	ITEM NO.	ITEM NO.	PACKING UNIT
16	3	A31S16	A31S26		A31S56	10
16	4	A41S16	A41S26	A41S36	A41S56	10
16	5		A51S26	A51S36	A51S56	10
32	3	A32S16	A32S26		A32S56	10
32	4	A42S16	A42S26	A42S36	A42S56	10
32	5		A52S26	A52S36	A52S56	10