

PANEL-MOUNTED SOCKET OUTLETS STRAIGHT

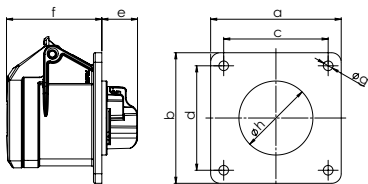
according to IEC 60309, EN 60309, VDE 0623



PANEL-MOUNTED SOCKET OUTLET, STRAIGHT

splash-proof IP54
* splash-proof IP44

- screw terminals
- suitable for cable ducts
- brass contacts



POLES	3	4	5	3	4	5
AMPERE	16			32		

a and b	75	75	75	75	75	75
c and d	60	60	60	60	60	60
e	21	21	21	23	23	23
f	55	55	55	67	67	67
g	5,5	5,5	5,5	5,5	5,5	5,5
h	43	45	55	55	55	58
Weight [g/each]	120	132	150	167	182	210

VOLTAGE	110 V~	230 V~	400 V~	440 V~	500 V~
FREQUENCY	50/60 Hz	50/60 Hz	50/60 Hz	50/60 Hz	50/60 Hz
DESIGNATION	4h	3p = 6h 4p/5p = 9h	3p = 9h 4p/5p = 6h	11h	7h

AMPERE	POLES	ITEM NO.	ITEM NO.	ITEM NO.	ITEM NO.	ITEM NO.	PACKING UNIT
16	3	F31S100	F31S200			F31S500	10
16*	4	F41S100	F41S200	F41S300	F41S400	F41S500	10
16	5		F51S200	F51S300		F51S500	10
32*	3	F32S100	F32S200			F32S500	10
32*	4	F42S100	F42S200	F42S300	F42S400	F42S500	10
32	5		F52S200	F52S300		F52S500	10

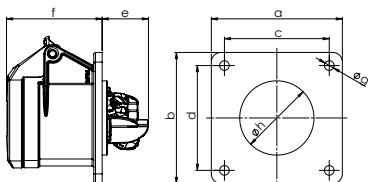
plug2power



PANEL-MOUNTED SOCKET OUTLET, STRAIGHT

splash-proof IP54
* splash-proof IP44

- screwless connection technology (plug2power)
- suitable for cable ducts
- nickel-plated contacts



POLES	3	4	5	3	4	5
AMPERE	16			32		

a and b	75	75	75	75	75	75
c and d	60	60	60	60	60	60
e	27	27	27	27	27	27
f	55	55	55	67	67	67
g	5,5	5,5	5,5	5,5	5,5	5,5
h	43	45	55	55	55	58
Weight [g/each]	123	132	155	167	182	211

VOLTAGE	110 V~	230 V~	400 V~
FREQUENCY	50/60 Hz	50/60 Hz	50/60 Hz
DESIGNATION	4h	3p = 6h 4p/5p = 9h	3p = 9h 4p/5p = 6h

AMPERE	POLES	ITEM NO.	ITEM NO.	ITEM NO.	PACKING UNIT
16	3	F31SL11	F31SL21		10
16*	4	F41SL11	F41SL21	F41SL31	10
16	5		F51SL21	F51SL31	10
32*	3	F32SL11	F32SL21		10
32*	4	F42SL11	F42SL21	F42SL31	10
32	5		F52SL21	F52SL31	10