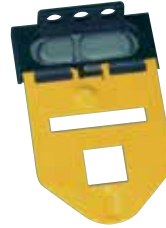


# ACCESSORIES FOR MOTOR PROTECTIVE CIRCUIT BREAKERS MS



**STOP BUTTON**  
not latching  
red, on grey surface

	ITEM NO.	WEIGHT g / EACH	PACKING UNIT
	<b>MS.PT</b>	55	5



**PADLOCKING FACILITY**  
for up to three padlocks

	ITEM NO.	WEIGHT g / EACH	PACKING UNIT
	<b>MS.VS</b>	100	10



**EMERGENCY-STOP BUTTON**  
latching, turn to release  
red, on yellow surface

	ITEM NO.	WEIGHT g / EACH	PACKING UNIT
	<b>MS.PV</b>	60	5



**KIT IP55**  
to increase degree of protection  
from IP41 to IP55

	ITEM NO.	WEIGHT g / EACH	PACKING UNIT
	<b>MS.BS</b>	25	10



**EMERGENCY-STOP BUTTON**  
latching, key release (2 keys)  
red, on yellow surface

	ITEM NO.	WEIGHT g / EACH	PACKING UNIT
	<b>MS.PS2</b>	65	5



**N-TERMINAL**  
connecting of fifth conductor

	ITEM NO.	WEIGHT g / EACH	PACKING UNIT
	<b>MS.N</b>	10	10



**INDICATOR LIGHT**  
with glow bulb,  
nominal rated voltage: 220-240 V

COLOUR	ITEM NO.	WEIGHT g / EACH	PACKING UNIT
green	<b>MS.SLG2</b>	10	5



**INDICATOR LIGHT**  
with glow bulb,  
nominal rated voltage: 380-440 V

COLOUR	ITEM NO.	WEIGHT g / EACH	PACKING UNIT
green	<b>MS.SLG3</b>	10	5