

EVENTLINE

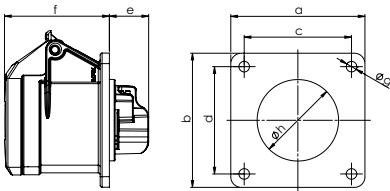
according to IEC 60309, EN 60309, VDE 0623



PANEL-MOUNTED SOCKET OUTLET STRAIGHT, BLACK

splash-proof IP44

- screw terminals
- brass contacts



POLES	3	4	5	3	4	5
AMPERE	16			32		

a and b	70	70	70	70	70	70
c and d	56	56	56	56	56	56
e	21	21	21	23	23	23
f	55	55	55	67	67	67
g	5,5	5,5	5,5	5,5	5,5	5,5
h	43	45	55	55	55	58
Weight [g/each]	115	127	141	162	178	206

VOLTAGE	230 V~	400 V~
FREQUENCY	50/60 Hz	50/60 Hz
DESIGNATION	3p = 6h 4p/5p = 9h	3p = 9h 4p/5p = 6h

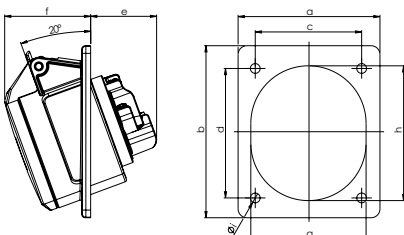
AMPERE	POLES	ITEM NO.	ITEM NO.	PACKING UNIT
16	3	F31S20B		10
16	4		F41S30B	10
16	5		F51S30B	10
32	3	F32S20B		10
32	4		F42S30B	10
32	5		F52S30B	10



PANEL-MOUNTED SOCKET OUTLET ANGLED 20°, BLACK

splash-proof IP44

- screw terminals
- brass contacts



POLES	3	4	5	3	4	5
AMPERE	16			32		

Flange a	80	80	80	80	80	80
Flange b	97	97	97	97	97	97
Hole spacing c	60	60	60	60	60	60
Hole spacing d	73	73	73	73	73	73
e	38	38	38	48	48	48
f	47	47	49	54	54	55
g	51	56	65	65	65	70
h	61	67	76	75	75	80
i	5,5	5,5	5,5	5,5	5,5	5,5
Weight [g/each]	116	132	154	166	182	214

VOLTAGE	230 V~	400 V~
FREQUENCY	50/60 Hz	50/60 Hz
DESIGNATION	3p = 6h 4p/5p = 9h	3p = 9h 4p/5p = 6h

AMPERE	POLES	ITEM NO.	ITEM NO.	PACKING UNIT
16	3	F31S22B		10
16	4		F41S32B	10
16	5		F51S32B	10
32	3	F32S22B		10
32	4		F42S32B	10
32	5		F52S32B	10